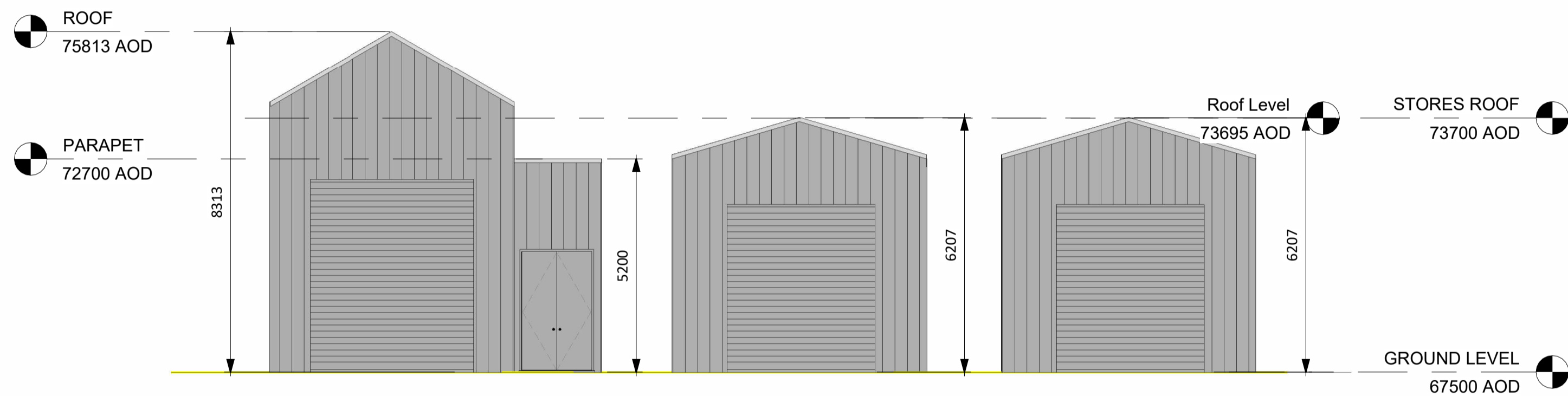
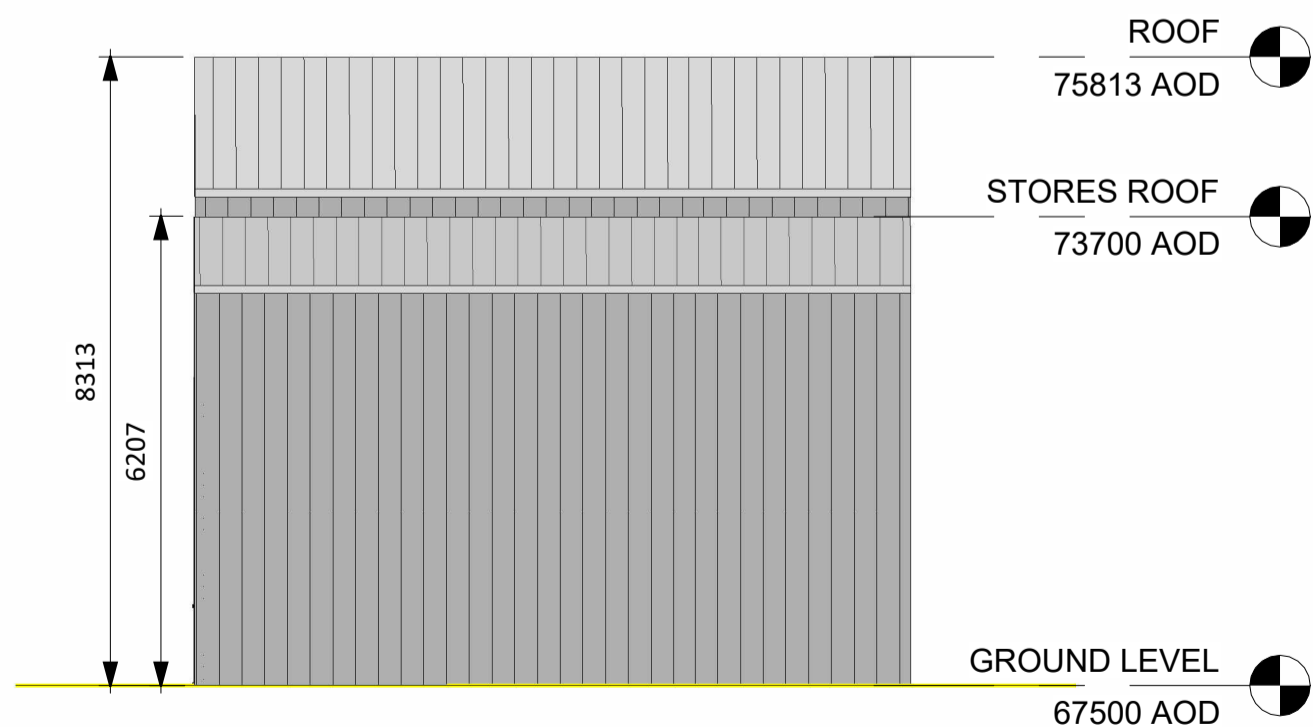


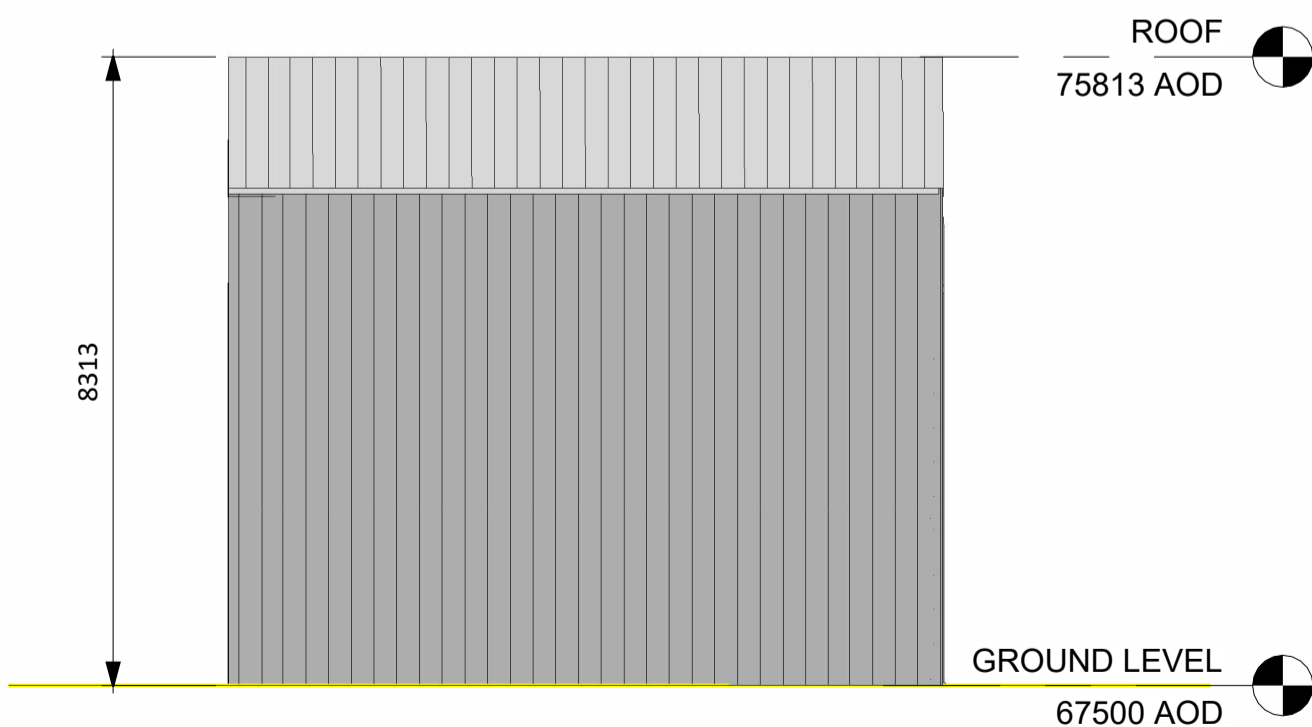
1 Lubrication Oil & Chemical Stores North
1 : 100



2 Lubrication Oil & Chemical Stores South
1 : 100



3 Lubrication Oil & Chemical Stores East
1 : 100

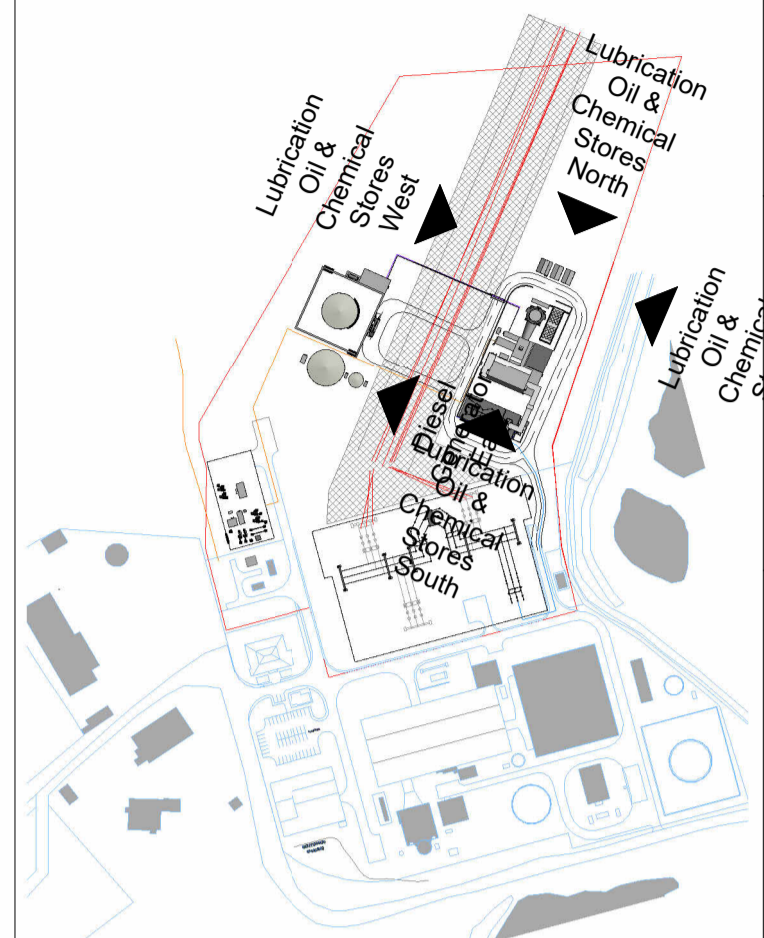


4 Lubrication Oil & Chemical Stores West
1 : 100

ALL INFORMATION ON THIS DRAWING IS INDICATIVE ONLY, AND MAY BE SUBJECT TO FURTHER DESIGN DEVELOPMENT.

DO NOT SCALE

NOTES:



Stores Key Plan
1 : 5000

R2.0	FOR PLANNING	AO1	DTW	HHE	10.08.23
R1.0	FOR PLANNING	AO1	DTW	HHE	07.08.23
REV.	DETAILS OF REVISION	DRAWN	CHKD	APR	DATE

FICHTNER
CONSULTING ENGINEERS LIMITED
92 George's Street Lower
Dun Laoghaire
Co Dublin, A96 VR66
Tel: +353 (1)506 0632
Website: www.fichtner.ie

CLIENT: **EPED**

SITE: **TYNAGH NORTH**

PROJECT: **TYNAGH NORTH**

TITLE: **LUBRICATION OIL & CHEMICAL STORES ELEVATIONS**

DRAWING STATUS:	FOR PLANNING	
DRAWN BY:	AO1	DATE: 03.08.23
CHECKED BY:	DTW	DATE: 03.08.23
APPROVED BY:	HHE	DATE: 03.08.23
FILENAME:	S3577-8910-0001DW Tynagh North OCGT R8.0	
OFFICE OF ISSUE:	DUBLIN	
SHEET SIZE:	A2	SCALE: 1:100

DRAWING No.: **S3577-8330-0007** REVISION: **R2.0**
Sheet1 of 1

